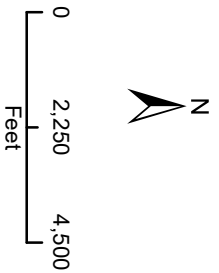


- Legend**
- Survey Area
 - USGS Quadrangle
 - Pipeline Centerline



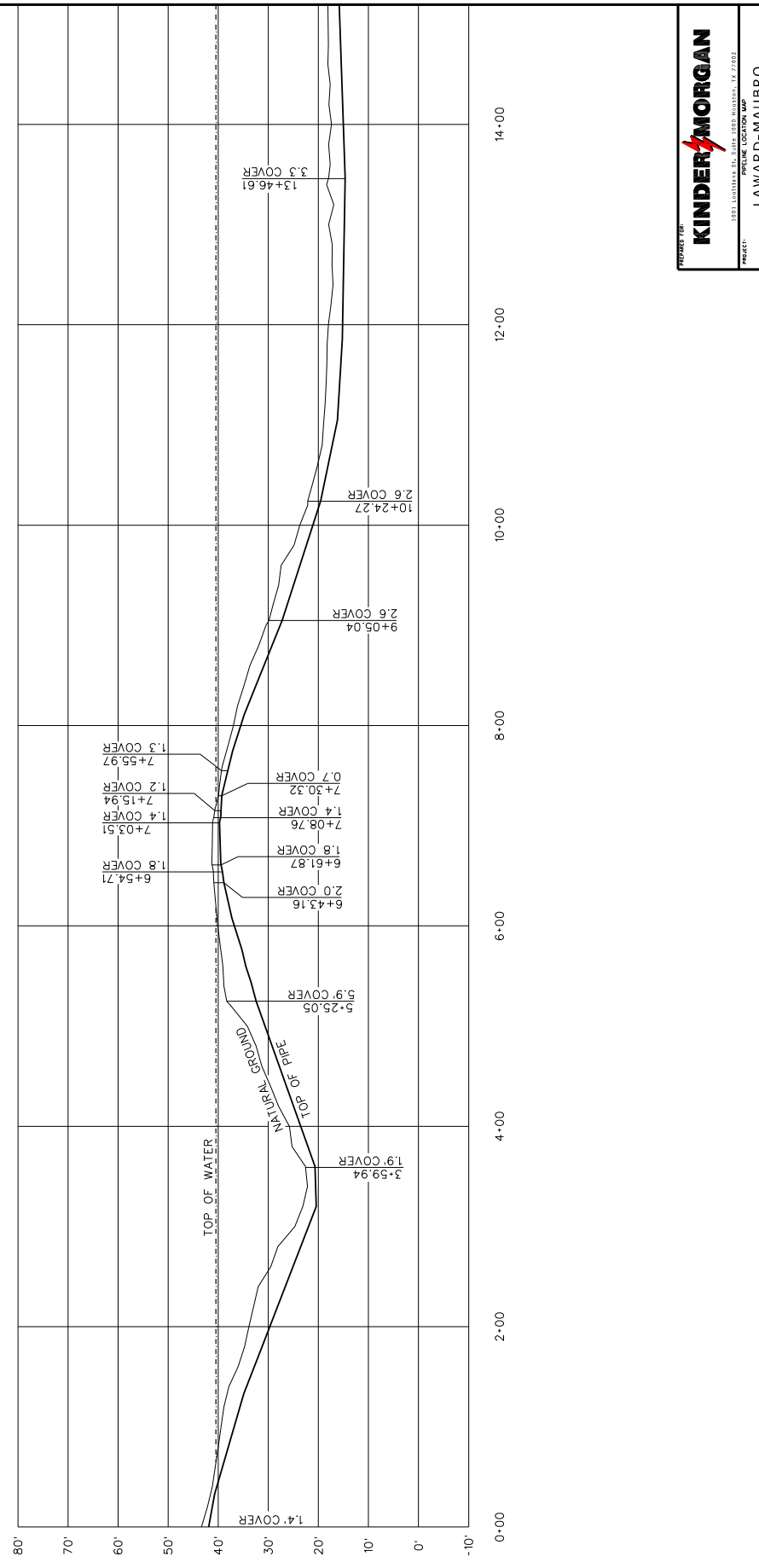
Scale: 1:45,000

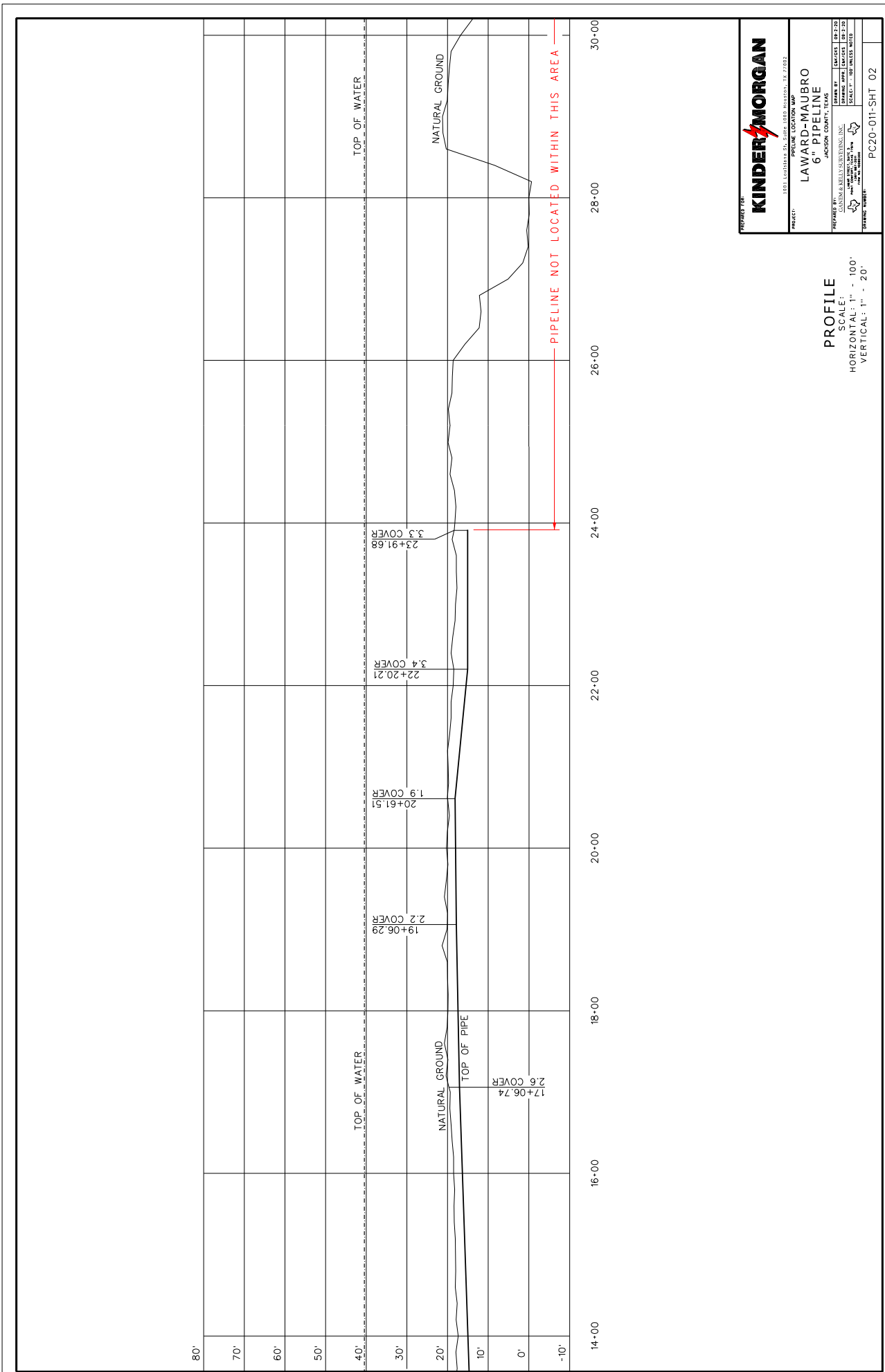



Kinder Morgan
 Tejas Index 127-8 Pipeline
 Abandonment Project
 Figure 2
 USGS Topographic Site Map
 Jackson County, Texas

KINDER MORGAN
 PROJECT: LARDER CREEK WATER TREATMENT PLANT
 PREPARED BY: GUSTAV & KELLI SERRANO, INC.
 DRAWN BY: JACOBSON COUNTY
 CHECKED BY: JACOBSON COUNTY
 DATE: 08-27-20
 SCALE: 1" = 100'
 SHEET NO: 2 OF 9
 DRAWING NUMBER: PC20-011-SHT-01

PROFILE
 SCALE: 1" = 100'
 HORIZONTAL: 1" = 100'
 VERTICAL: 1" = 20'

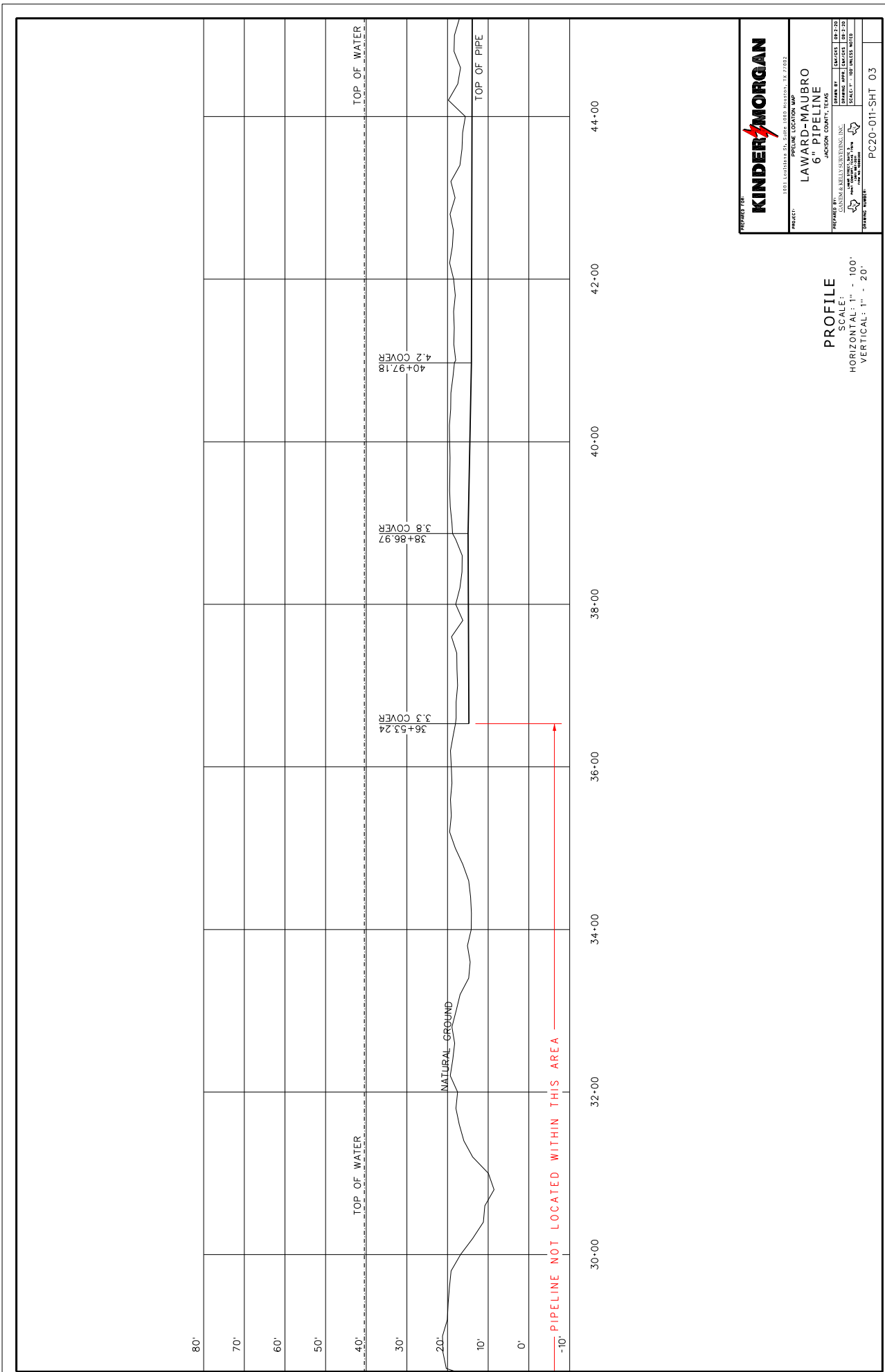


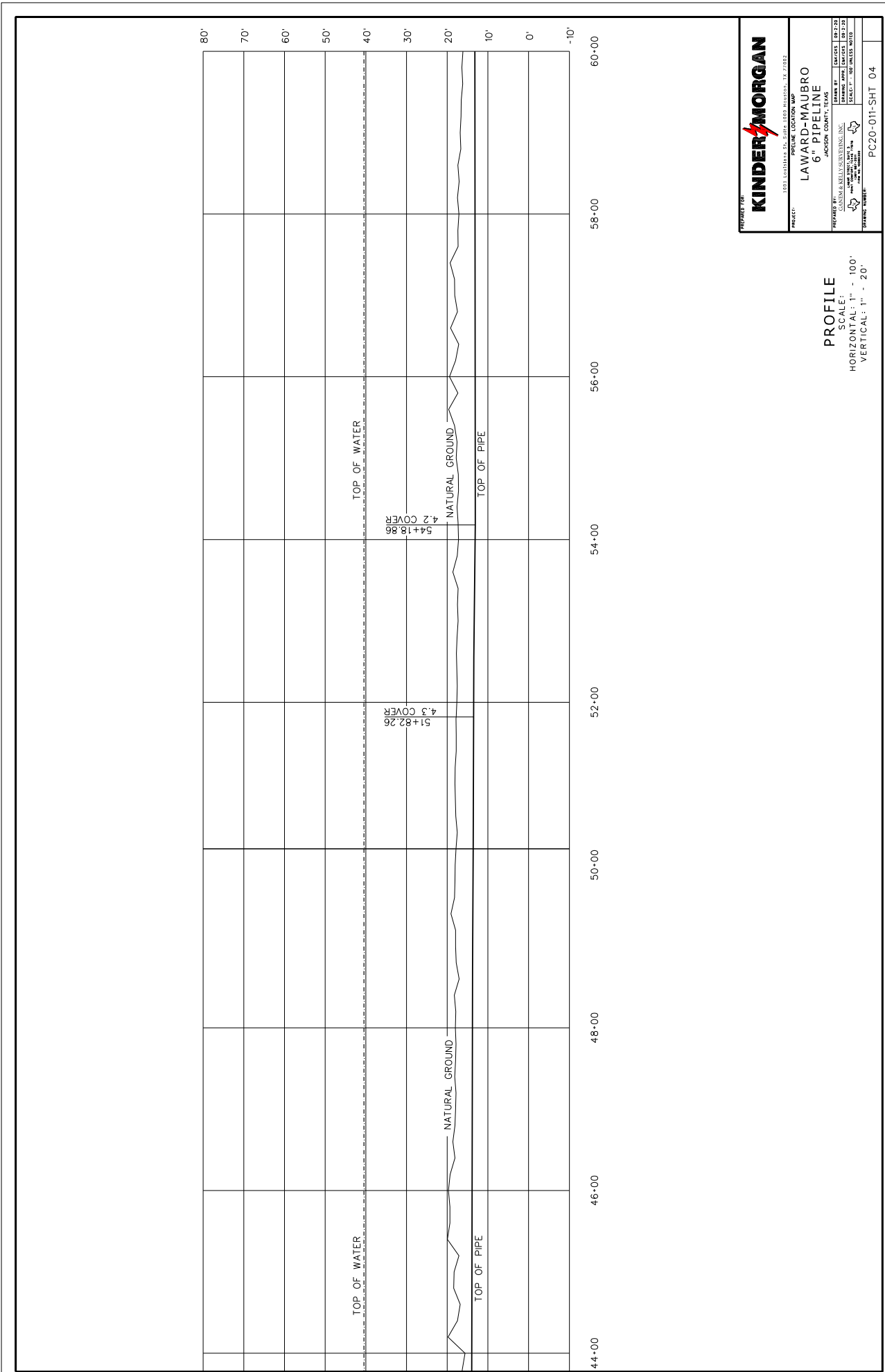


KINDER MORGAN
 PREPARED BY: GUSTAV & KELLI SERRANO, INC.
 PROJECT: LAWARD-MAUBRO 6" PIPELINE
 DRAWING NO.: SWG-2020-00462-03
 SHEET NO.: 3 OF 9
 DATE: 12/17/22

PROFILE
 SCALE: HORIZONTAL: 1" = 100'
 VERTICAL: 1" = 20'

PC20-011-SHT-02



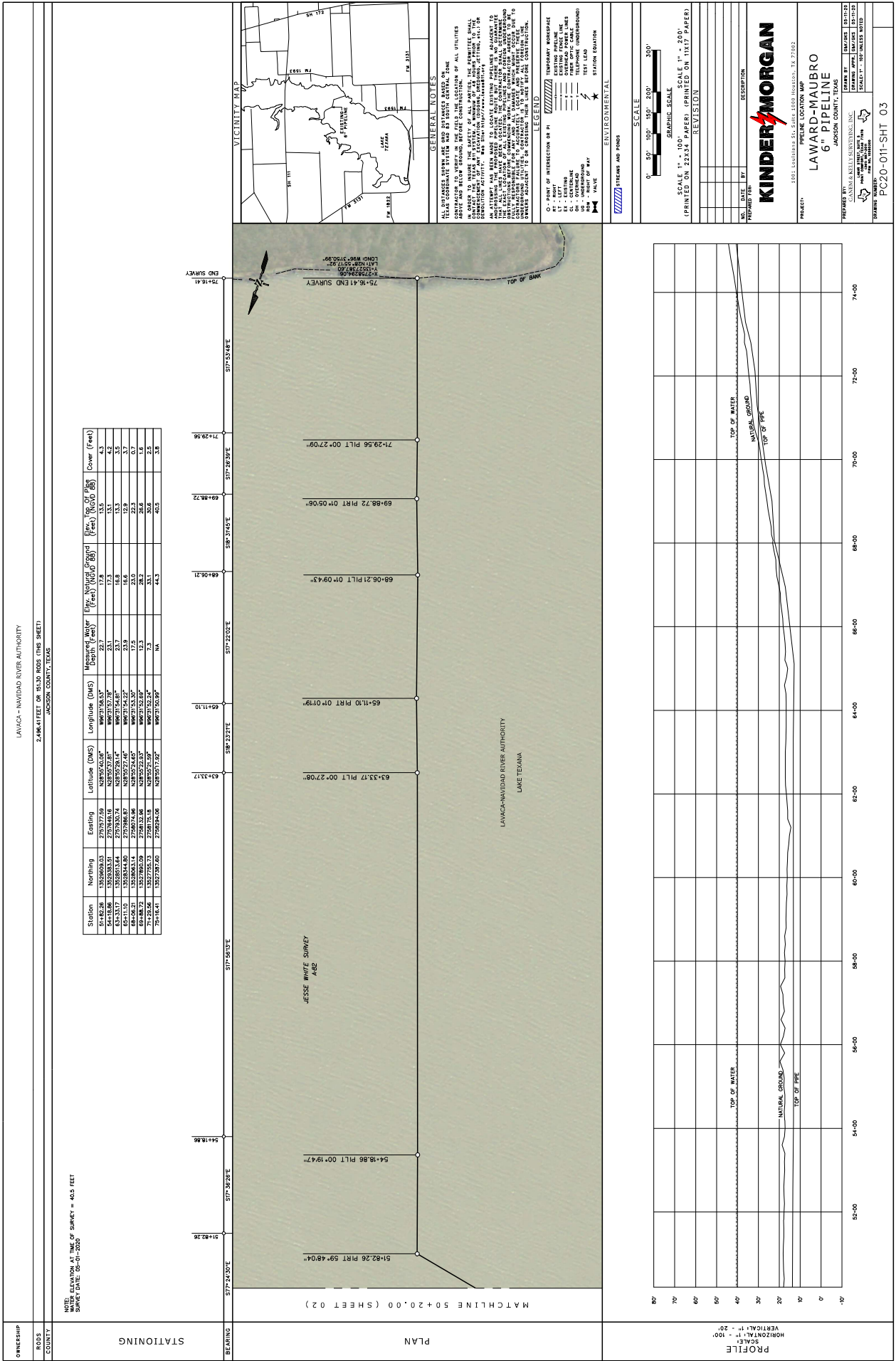


KINDER MORGAN
 PROJECT: LAWARD-MAUBRO 6" PIPELINE
 PREPARED BY: GUNTER & KELLY ENGINEERING, INC.
 JACKSON COUNTY, MISSOURI
 DRAWING APPROVAL: [Signature]
 DATE: 08/27/20
 SHEET NO.: 5 OF 10
 DRAWING NUMBER: PC20-011-SHT 04

PROFILE
 SCALE: HORIZONTAL: 1" = 100'
 VERTICAL: 1" = 20'

OWNERSHIP: LAKE TEXANA LAKE TEXANA RIVER AUTHORITY
 COUNTY: JACKSON COUNTY, TEXAS
 ELEVATION AT TIME OF SURVEY = 40.5 FEET
 SURVEY DATE: 08-01-2020

Station	Northing	Easting	Latitude (DMS)	Longitude (DMS)	Measured Water Elev. (feet)	Elev. Natural Ground (feet)	Flow of Pipe (ft)	Cover (feet)
0+00.00	135103.53	275054.65	N82°00'11.07"	W08°32'43.53"	NA	43.3	0.0	1.4
3+195.94	135107.04	275060.15	N82°00'11.07"	W08°32'43.53"	17.9	22.6	20.7	1.9
6+125.05	135109.87	275062.13	N82°00'11.07"	W08°32'43.53"	21.1	26.3	24.4	1.9
9+054.16	135112.70	275064.11	N82°00'11.07"	W08°32'43.53"	24.3	30.0	27.6	2.4
12+000.00	135115.53	275066.09	N82°00'11.07"	W08°32'43.53"	27.5	33.7	31.3	2.4
15+000.00	135118.36	275068.07	N82°00'11.07"	W08°32'43.53"	30.7	37.4	35.0	2.4
18+000.00	135121.19	275070.05	N82°00'11.07"	W08°32'43.53"	33.9	41.1	38.7	2.4
21+000.00	135124.02	275072.03	N82°00'11.07"	W08°32'43.53"	37.1	44.8	42.4	2.4
24+000.00	135126.85	275074.01	N82°00'11.07"	W08°32'43.53"	40.3	48.5	46.1	2.4
27+000.00	135129.68	275075.99	N82°00'11.07"	W08°32'43.53"	43.5	52.2	49.8	2.4
30+000.00	135132.51	275077.97	N82°00'11.07"	W08°32'43.53"	46.7	55.9	53.5	2.4
33+000.00	135135.34	275079.95	N82°00'11.07"	W08°32'43.53"	49.9	59.6	57.2	2.4
36+000.00	135138.17	275081.93	N82°00'11.07"	W08°32'43.53"	53.1	63.3	60.9	2.4
39+000.00	135141.00	275083.91	N82°00'11.07"	W08°32'43.53"	56.3	67.0	64.6	2.4
42+000.00	135143.83	275085.89	N82°00'11.07"	W08°32'43.53"	59.5	70.7	68.3	2.4
45+000.00	135146.66	275087.87	N82°00'11.07"	W08°32'43.53"	62.7	74.4	72.0	2.4
48+000.00	135149.49	275089.85	N82°00'11.07"	W08°32'43.53"	65.9	78.1	75.7	2.4
51+000.00	135152.32	275091.83	N82°00'11.07"	W08°32'43.53"	69.1	81.8	79.4	2.4
54+000.00	135155.15	275093.81	N82°00'11.07"	W08°32'43.53"	72.3	85.5	83.1	2.4
57+000.00	135157.98	275095.79	N82°00'11.07"	W08°32'43.53"	75.5	89.2	86.8	2.4
60+000.00	135160.81	275097.77	N82°00'11.07"	W08°32'43.53"	78.7	92.9	90.5	2.4
63+000.00	135163.64	275099.75	N82°00'11.07"	W08°32'43.53"	81.9	96.6	94.2	2.4
66+000.00	135166.47	275101.73	N82°00'11.07"	W08°32'43.53"	85.1	100.3	97.9	2.4
69+000.00	135169.30	275103.71	N82°00'11.07"	W08°32'43.53"	88.3	104.0	101.6	2.4
72+000.00	135172.13	275105.69	N82°00'11.07"	W08°32'43.53"	91.5	107.7	105.3	2.4
75+000.00	135174.96	275107.67	N82°00'11.07"	W08°32'43.53"	94.7	111.4	109.0	2.4
78+000.00	135177.79	275109.65	N82°00'11.07"	W08°32'43.53"	97.9	115.1	112.7	2.4
81+000.00	135180.62	275111.63	N82°00'11.07"	W08°32'43.53"	101.1	118.8	116.4	2.4
84+000.00	135183.45	275113.61	N82°00'11.07"	W08°32'43.53"	104.3	122.5	120.1	2.4
87+000.00	135186.28	275115.59	N82°00'11.07"	W08°32'43.53"	107.5	126.2	123.8	2.4
90+000.00	135189.11	275117.57	N82°00'11.07"	W08°32'43.53"	110.7	129.9	127.5	2.4
93+000.00	135191.94	275119.55	N82°00'11.07"	W08°32'43.53"	113.9	133.6	131.2	2.4
96+000.00	135194.77	275121.53	N82°00'11.07"	W08°32'43.53"	117.1	137.3	134.9	2.4
99+000.00	135197.60	275123.51	N82°00'11.07"	W08°32'43.53"	120.3	141.0	138.6	2.4
102+000.00	135200.43	275125.49	N82°00'11.07"	W08°32'43.53"	123.5	144.7	142.3	2.4
105+000.00	135203.26	275127.47	N82°00'11.07"	W08°32'43.53"	126.7	148.4	146.0	2.4
108+000.00	135206.09	275129.45	N82°00'11.07"	W08°32'43.53"	129.9	152.1	149.7	2.4
111+000.00	135208.92	275131.43	N82°00'11.07"	W08°32'43.53"	133.1	155.8	153.4	2.4
114+000.00	135211.75	275133.41	N82°00'11.07"	W08°32'43.53"	136.3	159.5	157.1	2.4
117+000.00	135214.58	275135.39	N82°00'11.07"	W08°32'43.53"	139.5	163.2	160.8	2.4
120+000.00	135217.41	275137.37	N82°00'11.07"	W08°32'43.53"	142.7	166.9	164.5	2.4
123+000.00	135220.24	275139.35	N82°00'11.07"	W08°32'43.53"	145.9	170.6	168.2	2.4
126+000.00	135223.07	275141.33	N82°00'11.07"	W08°32'43.53"	149.1	174.3	171.9	2.4
129+000.00	135225.90	275143.31	N82°00'11.07"	W08°32'43.53"	152.3	178.0	175.6	2.4
132+000.00	135228.73	275145.29	N82°00'11.07"	W08°32'43.53"	155.5	181.7	179.3	2.4
135+000.00	135231.56	275147.27	N82°00'11.07"	W08°32'43.53"	158.7	185.4	183.0	2.4
138+000.00	135234.39	275149.25	N82°00'11.07"	W08°32'43.53"	161.9	189.1	186.7	2.4
141+000.00	135237.22	275151.23	N82°00'11.07"	W08°32'43.53"	165.1	192.8	190.4	2.4
144+000.00	135240.05	275153.21	N82°00'11.07"	W08°32'43.53"	168.3	196.5	194.1	2.4
147+000.00	135242.88	275155.19	N82°00'11.07"	W08°32'43.53"	171.5	200.2	197.8	2.4
150+000.00	135245.71	275157.17	N82°00'11.07"	W08°32'43.53"	174.7	203.9	201.5	2.4
153+000.00	135248.54	275159.15	N82°00'11.07"	W08°32'43.53"	177.9	207.6	205.2	2.4
156+000.00	135251.37	275161.13	N82°00'11.07"	W08°32'43.53"	181.1	211.3	208.9	2.4
159+000.00	135254.20	275163.11	N82°00'11.07"	W08°32'43.53"	184.3	215.0	212.6	2.4
162+000.00	135257.03	275165.09	N82°00'11.07"	W08°32'43.53"	187.5	218.7	216.3	2.4
165+000.00	135259.86	275167.07	N82°00'11.07"	W08°32'43.53"	190.7	222.4	220.0	2.4
168+000.00	135262.69	275169.05	N82°00'11.07"	W08°32'43.53"	193.9	226.1	223.7	2.4
171+000.00	135265.52	275171.03	N82°00'11.07"	W08°32'43.53"	197.1	229.8	227.4	2.4
174+000.00	135268.35	275173.01	N82°00'11.07"	W08°32'43.53"	200.3	233.5	231.1	2.4
177+000.00	135271.18	275174.99	N82°00'11.07"	W08°32'43.53"	203.5	237.2	234.8	2.4
180+000.00	135274.01	275176.97	N82°00'11.07"	W08°32'43.53"	206.7	240.9	238.5	2.4
183+000.00	135276.84	275178.95	N82°00'11.07"	W08°32'43.53"	209.9	244.6	242.2	2.4
186+000.00	135279.67	275180.93	N82°00'11.07"	W08°32'43.53"	213.1	248.3	245.9	2.4
189+000.00	135282.50	275182.91	N82°00'11.07"	W08°32'43.53"	216.3	252.0	249.6	2.4
192+000.00	135285.33	275184.89	N82°00'11.07"	W08°32'43.53"	219.5	255.7	253.3	2.4
195+000.00	135288.16	275186.87	N82°00'11.07"	W08°32'43.53"	222.7	259.4	257.0	2.4
198+000.00	135290.99	275188.85	N82°00'11.07"	W08°32'43.53"	225.9	263.1	260.7	2.4
201+000.00	135293.82	275190.83	N82°00'11.07"	W08°32'43.53"	229.1	266.8	264.4	2.4
204+000.00	135296.65	275192.81	N82°00'11.07"	W08°32'43.53"	232.3	270.5	268.1	2.4
207+000.00	135299.48	275194.79	N82°00'11.07"	W08°32'43.53"	235.5	274.2	271.8	2.4
210+000.00	135302.31	275196.77	N82°00'11.07"	W08°32'43.53"	238.7	277.9	275.5	2.4
213+000.00	135305.14	275198.75	N82°00'11.07"	W08°32'43.53"	241.9	281.6	279.2	2.4
216+000.00	135307.97	275200.73	N82°00'11.07"	W08°32'43.53"	245.1	285.3	282.9	2.4
219+000.00	135310.80	275202.71	N82°00'11.07"	W08°32'43.53"	248.3	289.0	286.6	2.4
222+000.00	135313.63	275204.69	N82°00'11.07"	W08°32'43.53"	251.5	292.7	290.3	2.4
225+000.00	135316.46	275206.67	N82°00'11.07"	W08°32'43.53"	254.7	296.4	294.0	2.4
228+000.00	135319.29	275208.65	N82°00'11.07"	W08°32'43.53"	257.9	300.1	297.7	2.4
231+000.00	135322.12	275210.63	N82°00'11.07"	W08°32'43.53"	261.1	303.8	301.4	2.4
234+000.00	135324.95	275212.61	N82°00'11.07"	W08°32'43.53"	264.3	307.5	305.1	2.4
237+000.00	135327.78	275214.59	N82°00'11.07"	W08°32'43.53"	267.5	311.2	308.8	2.4
240+000.00	135330.61	275216.57	N82°00'11.07"	W08°32'43.53"	270.7	314.9	312.5	2.4
243+000.00	135333.44	275218.55	N82°00'11.07"	W08°32'43.53"	273.9	318.6	316.2	2.4
246+000.00	135336.27	275220.53	N82°00'11.07"	W08°32'43.53"	277.1	322.3	319.9	2.4
249+000.00	135339.10	275222.51	N82°00'11.07"	W08°32'43.53"	280.3	326.0	323.6	2.4
252+000.00	135341.93	275224.49	N82°00'11.07"	W08°32'43.53"	283.5	329.7	327.3	2.4
255+000.00	135344.76	275226.47	N82°00'11.07"	W08°32'43.53"	286.7	333.4	331.0	2.4
258+000.00	135347.59	275228.45	N82°00'11.07"	W08°32'43.53"	289.9	337.1	334.7	2.4
261+000.00	135350.42	275230.43	N82°00'11.07"	W08°32'43.53"	293.1	340.8	338.4	2.4
264+000.00	135353.25	275232.41	N82°00'11.07"	W08°32'43.53"	296.3	344.5	342.1	2.4
267+000.00	135356.08	275234.39	N82°00'11.07"	W08°32'43.53"	299.5	348.2	345.8	2.4
270+000.00	135358.91	275236.37	N82°00'11.07"	W08°32'43.53"	302.7	351.9	349.5	2.4
273+000.00	135361.74	275238.35	N82°00'11.07"	W08°32'43.53"	305.9	355.6	353.2	2.4
276+000.00	135364.57	275240.33	N82°00'11.07"	W08°32'43.53"	309.1	359.3	356.9	2.4
279+000.00	135367.40	275242.31	N82°00'11.07"	W08°32'43.53"	312.3	363.0	360.6	2.4
282+000.00	135370.23	275244.29	N82°00'11.07"	W08°32'43.53"	315.5	366.7	364.3	2.4
285+000.00	135373.06	275246.27	N82°00'11.07"	W08°32'43.53"	318.7	370.4	368.0	2.4
288+000.00	135375.89	275248.25	N82°00'11.07"	W08°32'43.53"	321.9	374.1	371.7	2.4
291+000.00	135378.72	275250.23	N82°00'11.07"	W08°32'43.53"	325.1	377.8	375.4	2.4
294+000.00	135381.55	275252.21	N82°00'11.07"	W08°32'43.53"	328.3	381.5	379.1	2.4
297+000.00	135384.38	275254.19	N82°00'11.07"	W08°32'43.53"	331.5	385.2	382.8	2.4
300+000.00	135387.21	275256.17	N82°00'11.07"	W08°32'43.53"	334.7	388.9	386.5	2.4
303+000.00	135390.04	275258.15	N82°00'11.07"	W08°32'43.53"	337.9	392.6	390.2	2.4
306+000.00								



LAJACA - NAVIDAD RIVER AUTHORITY
2,148.41 FEET OR 643.0 ROSS (ONS SHEET)
JACKSON COUNTY, TEXAS

NOTE: ELEVATION AT TIME OF SURVEY = 40.5 FEET
SURVEY DATE: 08-01-2020

OWNERSHIP
ROSS
COUNTY

STATIONING

BEARING

PLAN

PROFILE

GENERAL NOTES

LEGEND

SCALE

KINDER MORGAN

LAWARD MAUBRO

6" PIPELINE

PROJECT: JACKSON COUNTY
PREPARED BY: LINDA KELLER-SUNDERLINE, INC.
DATE: 08/01/2020
SCALE: 1" = 100'
SHEET: 1 OF 10

PC20-011-SHT 03